



The right solution  
for **SNOWMAKING**



**caprari**

# Our Technology and advantages

## HIGH PRESSURE MULTISTAGE HORIZONTAL PUMPS

### PM Series

Reliability and low costs for both operation and maintenance

High hydraulic efficiencies

Up to 100 bar optimized designed obtained by advanced computer calculations

Capacity up to l/s 160  
Head up to m 1000  
Power up to kW 650



## BOREHOLE ELECTRIC PUMPS

### E Series

More than 9.000 reliable solutions for a variety of demanding applications. Sturdy cast iron construction. On request AISI 316 STAINLESS STEEL, DUPLEX and SUPERDUPLEX

Best in class efficiency and benchmark performance

Reliability, sturdiness and maintenance simplicity

Noiseless

Pumps for specific applications with high percentage of solids and sand (up to 450 g/m<sup>3</sup>)

4 pole solutions: perfect for continuous use

Submersible Electric motors with innovative HT – High Thrust Bearing. Three times more resistance

Capacity up to l/s 350  
Head up to m 850  
Power up to kW 440



## ELECTRIC SUBMERSIBLE SEWAGE PUMPS

### K+ non-stop Series

Extremely sturdy and compact

Highly efficient and maximum reliability in heavy duty conditions

Remarkable energy savings and reductions in maintenance costs

Non-stop system: anti-clogging solution

Capacity up to l/s 710  
Head up to m 66  
Power up to kW 180



## VERTICAL MULTISTAGE ELECTRIC PUMPS

### HVU-HV Series

Vertical multistage electric pumps are designed in a solid and sturdy construction in order to achieve high performance and high efficiency

Reliability and low costs for both operation and maintenance

Silent working without vibration

Garanteed performances over time

Capacity up to l/s 50  
Head up to m 250  
Power up to kW 90



## VERTICAL LINESHAFT PUMPS

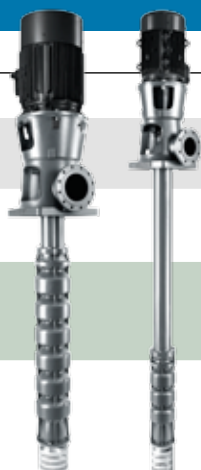
### P Series

Quality and flexibility of use

Surface motor -> simplicity of maintenance and high efficiency

Simplicity of installation, compact size and saving on the cost of construction work

Capacity up to l/s 5000  
Head up to m 250  
Power up to MW 3



## NORM PUMPS

### NC Series

Conform to EN733 (DIN24255) and exceeding

Built with BACK PULL OUT system and mechanical seal

Materials : CAST IRON, AISI 316 STAINLESS STEEL and DUPLEX

Capacity up to l/s 300  
Head up to m 100  
Power up to kW 160



## WATER INTAKE

Water extraction from artificial basins or tanks

**PM Series**

**E Series**

**P Series**

**HVU-HV Series**



## BOOSTING PUMP

Booster pumps for pumping pressurized water into the supply lines of snow makers

**E Series in Booster**

**PM Series**

**P Series**

**HVU-HV Series**



## SERVICE PUMP

Auxiliary services and wastewater treatment in the structures of the ski resort

**K+ non stop Series**

**CVX Series**

**NC Series**



## EMERGENCY PUMP

**K+ non stop Series**

**CVX Series**

**NC Series**





## Our Group

Choosing **Caprari** means choosing excellence.

Established in 1945, Caprari is a global leader in the production of **reliable, high-efficiency centrifugal pumps and electric submersible motors** and in the creation of **advanced solutions for managing the integrated water cycle**.

## Our Products

Caprari offers a **complete range of highly specialized products** to cover the collection, distribution, treatment of water and industrial sector. Focusing on reliability and efficiency through continuous innovation and advanced manufacturing technology, Caprari is ensuring **sustainable energy-savings and lowest possible life cycle costs** for its customers.

## Our Experience

From selection support to commissioning, **Caprari accompanies its customers on every step along the way**, thoroughly analyzing their requirements and **offering targeted, reliable and technologically advanced solutions**.

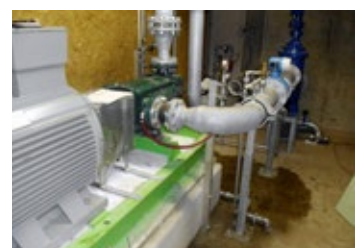
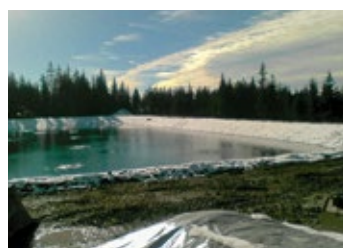
Customers can benefit from **iPump®**, a **user-friendly web portal for selection, proposal, training and assistance**, dedicated to professionals in the water sector.

## Our Projects

<b>Project</b>	PAGANELLA 2001
<b>Country</b>	Italy
<b>Supply</b>	No. 6 Borehole Electric pumps $P_2 = 135$ HP Nr. 4 High Pressure Multistage Horizontal pumps $P_2 = 710$ HP
<b>Description</b>	300 l/s had to be pumped with minimum number of pumps. This was why engineered pumps had to be designed. The benefits gained by the customer, who considered ours to be the best solution from a technical/economic point of view, are outlined below: <ul style="list-style-type: none"> <li>Enhanced machine performance with improved efficiency and ensuing energy saving.</li> <li>Supply with an important services package provided by our Assistance Centre during the construction stage and when the plant undergoes maintenance.</li> </ul>



<b>Project</b>	GARMISCH-PARTENKIRCHEN
<b>Country</b>	Germany
<b>Supply</b>	High Pressure Multistage Horizontal pumps – PM series $P_2 = 132$ kW
<b>Description</b>	The water supply is provided by an artificial lake with 12,000 m <sup>3</sup> . A side has been realized plant for the high-pressure multistage centrifugal pumps type PMS 80 / 7Y with horizontal shaft. That give 3,000 gallons of water per minute at individual cannons. It is possible make artificial snow for three days non-stop.



## Engineered Solutions

To go beyond  
your expectations

## After Sales Network

Worldwide support  
whenever you need it

## Training

Share our expertise:  
70 years of pumping experience



**OUR EXPERIENCE**  
The right solutions  
for your success

**Certified Quality System**  
100% guaranteed excellence  
with every pump supplied

**ISO 9906 Tested Units**  
100% guarantee  
of requested performances

**Selection Support**  
To match the right product  
with your application

1945  
**caprari**

