



The right solution
for **OFFSHORE**
and **MARINE**



caprari

Our Technology and advantages

BOREHOLE ELECTRIC PUMPS

E Series

More than 9.000 reliable solutions for a variety of demanding applications. Sturdy cast iron construction. On request AISI 316 STAINLESS STEEL, DUPLEX, SUPERDUPLEX and BRONZE

Best in class efficiency and benchmark performance

Reliability, sturdiness and maintenance simplicity

Noiseless

Pumps for specific applications with high percentage of solids and sand (up to 450 g/m³)

4 pole solutions: perfect for continuous use

Submersible Electric motors with innovative HT – High Thrust Bearing.
Three times more resistance

ENDURANCE Series

ENDURANCE series is made of micro-cast stainless steel. Along with Caprari sophisticated design systems, this technology allows to achieve superior efficiencies thanks to the optimization of the hydraulic profiles

The very thick stainless steel used and the seamless construction make the ENDURANCE series extremely resistant to wear from sand and abrasion in general. They provide an excellent performance in the most extreme conditions with salty water

Capacity up to	l/s 350
Head up to	m 850
Power up to	kW 440



ELECTRIC SUBMERSIBLE SEWAGE PUMPS

K+ non-stop Series

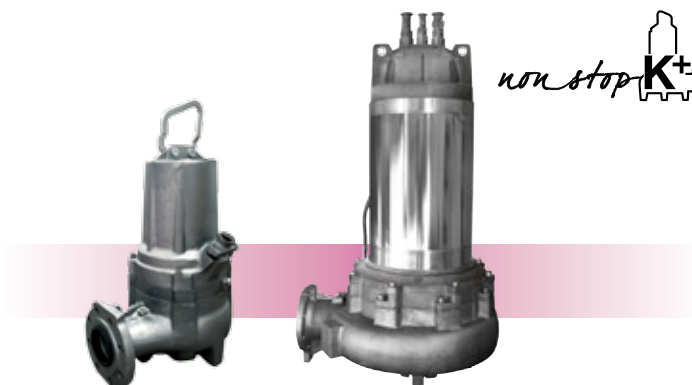
Extremely sturdy and compact

Highly efficient and maximum reliability in heavy duty conditions

Remarkable energy savings and reductions in maintenance costs

Non-stop system: anti-clogging solution

Capacity up to	l/s 710
Head up to	m 66
Power up to	kW 180



NORM PUMPS

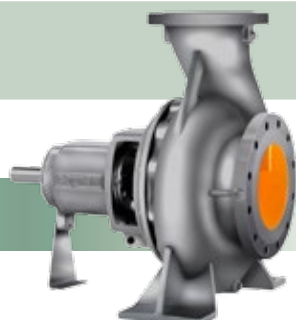
NC Series

Conform to EN733 (DIN24255) and exceeding

Built with BACK PULL OUT system and mechanical seal

Materials : CAST IRON, AISI 316 STAINLESS STEEL and DUPLEX

Capacity up to	l/s 300
Head up to	m 100
Power up to	kW 160



VERTICAL LINESHAFT PUMPS

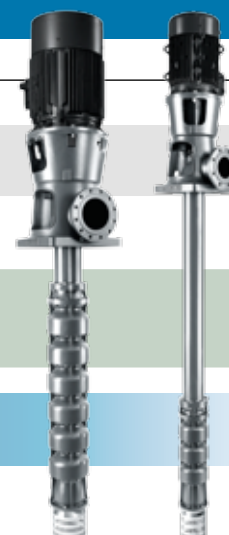
P Series

Quality and flexibility of use

Surface motor -> simplicity of maintenance and high efficiency

Simplicity of installation, compact size and saving on the cost of construction work

Capacity up to	l/s 5000
Head up to	m 250
Power up to	MW 3



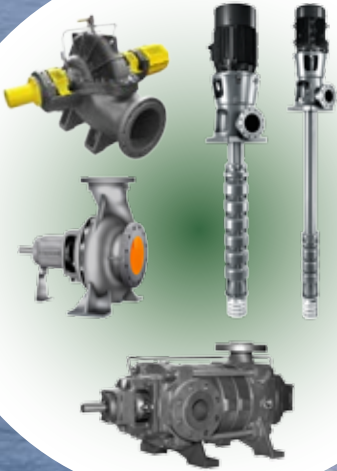
FIREFIGHTING SYSTEM

NC Series

SCC Series

PM Series

P Series

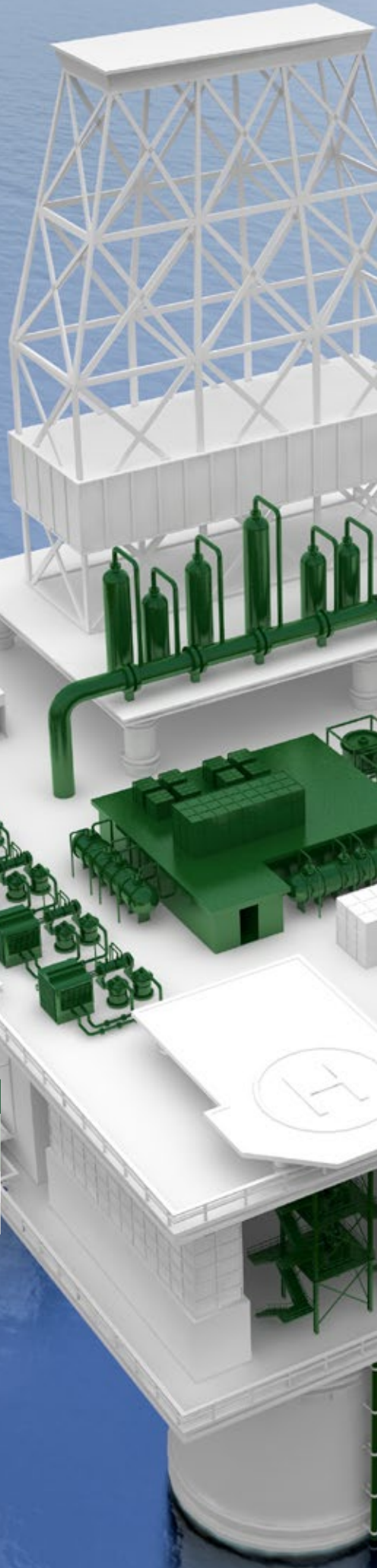
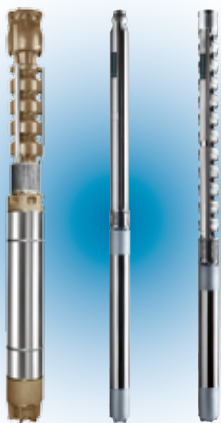


SEAWATER INTAKE (PRE-FILL/Ballast)

Keep the platform in vertical and stable position through seawater ballast tanks

E Series

ENDURANCE Series

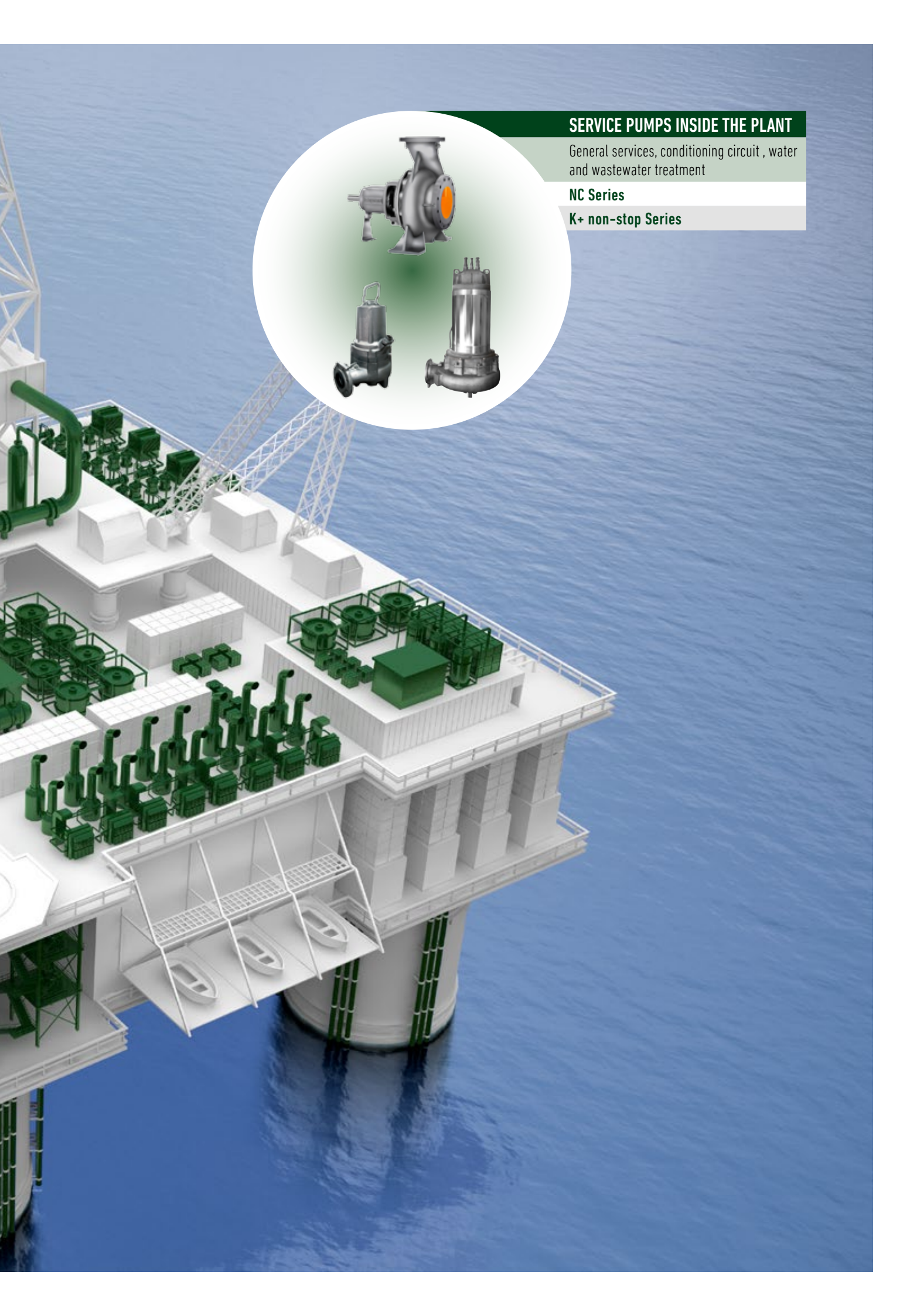


SERVICE PUMPS INSIDE THE PLANT

General services, conditioning circuit , water and wastewater treatment

NC Series

K+ non-stop Series





Our Group

Choosing **Caprari** means choosing excellence.

Established in 1945, Caprari is a global leader in the production of **reliable, high-efficiency centrifugal pumps and electric submersible motors** and in the creation of **advanced solutions for managing the integrated water cycle**.

Our Products

Caprari offers a **complete range of highly specialized products** to cover the collection, distribution, treatment of water and industrial sector. Focusing on reliability and efficiency through continuous innovation and advanced manufacturing technology, Caprari is ensuring **sustainable energy-savings and lowest possible life cycle costs** for its customers.

Our Experience

From selection support to commissioning, **Caprari accompanies its customers on every step along the way**, thoroughly analyzing their requirements and **offering targeted, reliable and technologically advanced solutions**.

Customers can benefit from **iPump®**, a **user-friendly web portal for selection, proposal, training and assistance**, dedicated to professionals in the water sector.

Our Projects

Project	MAARI OIL PLATFORM PROJECTS
Country	New Zealand
Supply	No. 12 Borehole Electric pumps and Control Panels
Description	<p>The platform is self installing and consists of 3 major components, the gravity base, the tubular leg structure, and the floating deck. The tubular structure has been sunk into the sea then anchored to the seabed through the leg penetration.</p> <p>A critical function of this process was the control of the flow rate of the water evacuated from the base.</p> <p>Twelve Caprari borehole electric pumps were used for the base pumping operations. Caprari supplied the pumps, designed and manufactured the control and data logging systems and subsequently operated the base pumping system during the offshore installation phase.</p>



Project	CASTIGNEAU
Country	France
Supply	No. 2 Vertical Lineshaft pumps for sea water - P ₂ = 315 kW each .
Description	<p>Thanks to the study of the plant, Caprari optimized the number of machines involved in search of the maximum operating efficiency obtaining 7,000 m³ / h flow rate for each pumping unit.</p> <p>The machines pump sea water and are installed in a Dry- Dock.</p>



Engineered Solutions

To go beyond
your expectations

After Sales Network

Worldwide support
whenever you need it

Training

Share our expertise:
70 years of pumping experience



OUR EXPERIENCE
The right solutions
for your success

Certified Quality System
100% guaranteed excellence
with every pump supplied

ISO 9906 Tested Units
100% guarantee
of requested performances

Selection Support
To match the right product
with your application

1945
caprari

